

SUL

MISPRONOUNCED SINCE

1976



FLIP

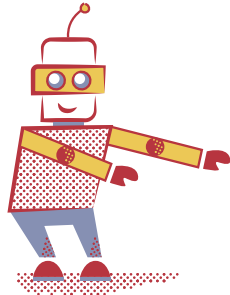


PLAY



WELCOME to SUL Education

We are an independent educational organisation with more than 40 years' experience in helping young learners re-discover their joy in learning.



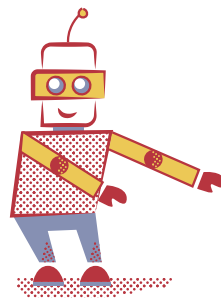
If you need to improve your English, develop your critical thinking and creativity while enjoying great cultural and sporting experiences, we can help you grow in confidence more than ever before!

You'll find we've kept all your favourite activities and in 2020 we've introduced several exciting new opportunities.

Therefore my hope is that you will make SUL Education your first choice for developing your talents in 2020!!

Christopher RETALLACK

Founder



CONTENT

01

THE AMAZING
EXPERIENCE



P-09

02

HOME
TUITION



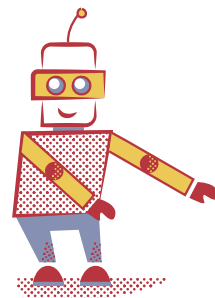
P-101

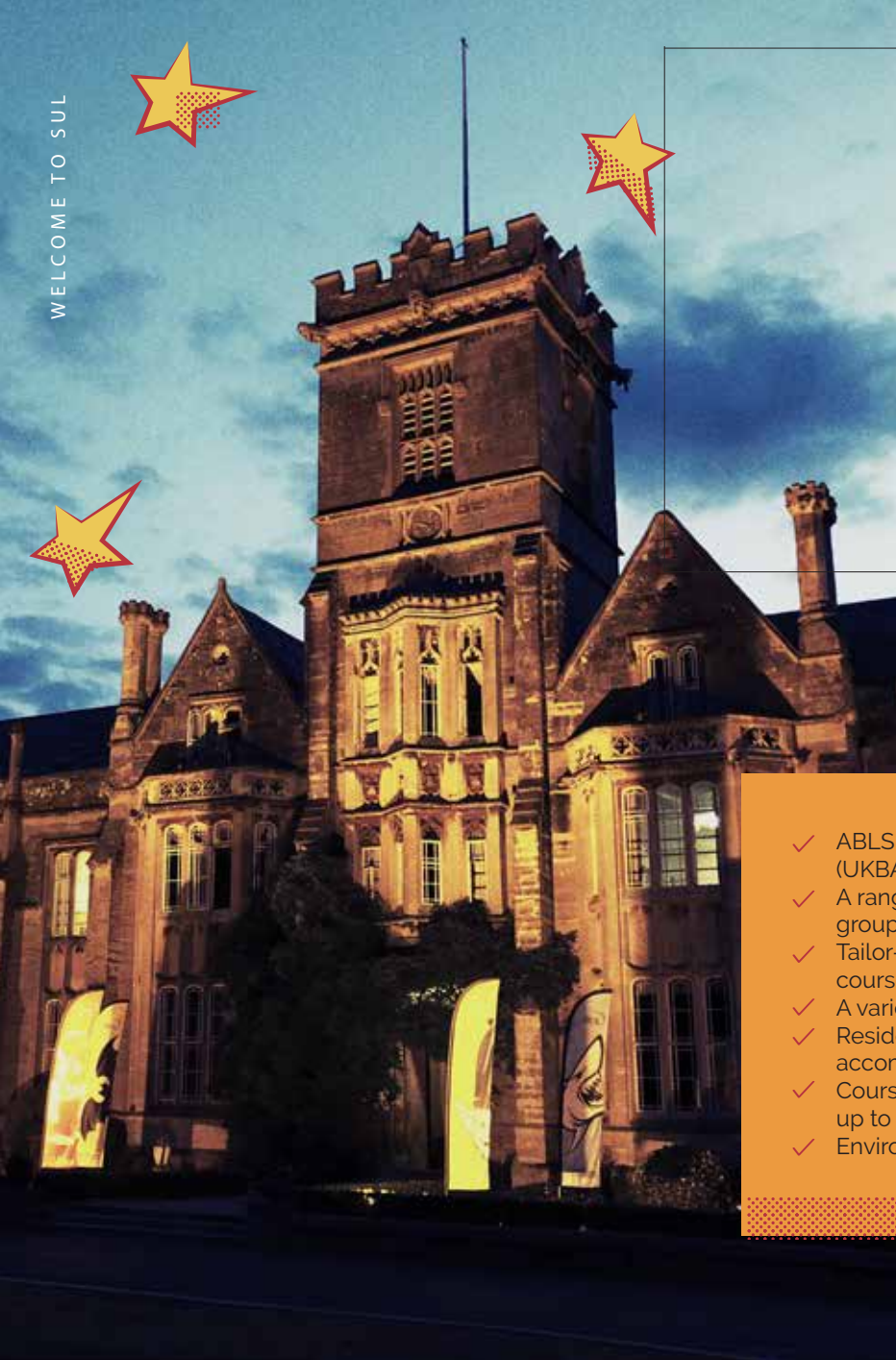
03

EDUCATIONAL
VISITS



P-135



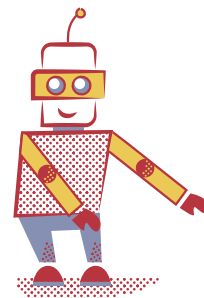


SUL Education is based in Cornwall in the south west of England. We deliver English language experiences embracing British culture. Even the company name SUL is of Celtic origin meaning sun, creatively interpreted as enlightenment through education.

SUL is a friendly and caring company that makes great efforts to ensure every student is happy and safe during their stay. We aim to deliver life-changing experiences that will enhance every student's future opportunities.



- ✓ ABLS accredited (UKBA approved)
- ✓ A range of SUL group courses
- ✓ Tailor-made group courses
- ✓ A variety of locations
- ✓ Residential or homestay accommodation
- ✓ Courses from 3 nights up to 4 weeks
- ✓ Environmentally friendly



TEACHING

At SUL, it is very important to us that our students leave with some tangible improvement to their English skills.

To ensure this, all courses have a focus on functional language, which students will need to use on their programmes. Whether language is to communicate with host families, language to go shopping or language to participate in team building activities, it's all fun and functional.

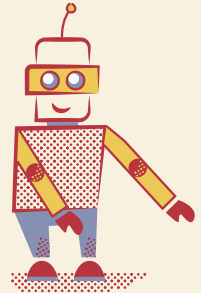
The language content is tailored to the programme. We work closely with our teachers to ensure all students gain confidence leaving the UK and feel more assured about using English for real-life, authentic situations.

We have a strong focus on speaking and listening, aiming to improve both fluency and accuracy.

Whether you choose a residential centre or a homestay, we can provide a full activity programme to suit a student's or a group's needs.

For students on our Amazing Experience programmes, we offer educational visits and activities which promote greater cultural understanding, communication in English and tasks for team building, leadership skills and fun!

ACTIVITIES





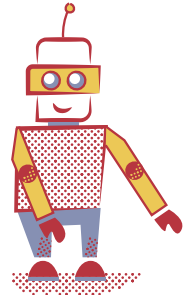
SUL
Means SUN
Foundation

SUL MEANS SUN FOUNDATION

In a world of increasing economic and social disparities, we believe in continuing to offer assistance to some deserving students who wouldn't otherwise be able to benefit from our courses.

To this end we are now setting up our new formal foundation, to offer assistance to a greater number of students in 2020.

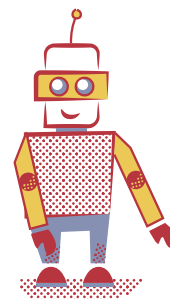
We hope that many of our partners will join us in this new venture. Together we can help change more lives and bring hope for our common future.



The idea of the Cocoa and Croissant web series is really simple: two kids, no script and just a sip of cocoa and a bite of croissant.



cocoa
& ☺



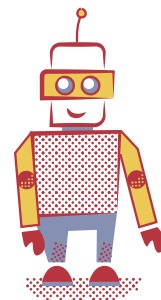
PART

01



THE AMAZING EXPERIENCE

THE AMAZING EXPERIENCE IS THE RANGE OF SUL'S INTERNATIONAL JUNIOR COURSES FOR UNDER 18-YEAR-OLDS, WHICH GIVE STUDENTS THE OPPORTUNITY TO DEVELOP THEIR TALENTS AND EXPLORE THE WONDER OF EDUCATION BY CRISS-CROSSING THE GLOBE.



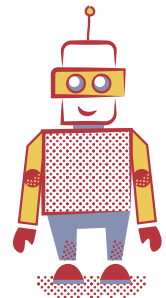
The logo for the SUL League, featuring the letters 'SUL' in a large, bold, white font above the word 'LEAGUE' in a smaller, white font, all contained within a purple circular background.

SUL
LEAGUE



SUL League is a system which helps to enhance the academic and social programmes at SUL, as well as increase the level of students' integration into an academic process. It plays an important part in motivating students who are passionate for learning.

The SUL League is an exciting and inclusive opportunity for our students to get involved in a Global Project, where young people from all over the world compete to become SUL League Champions! Four teams, five categories to score points in. Which team will be yours?



SUL LEAGUE CATEGORIES

Academic achievement

Got the brains to be the best? Win points by answering questions, achieving goals and producing outstanding work.

Participation

Get involved to score! Show your energetic side and get involved in games, songs and activities to score points for your team.

Language

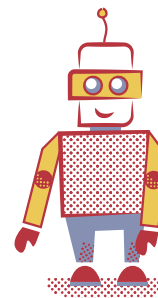
Gain points for showing an excellent grasp of new language learnt. Lose points for failing to use English in the class.

Environmental awareness

At SUL we look after our environment, and we want you to do the same. Look after your possessions, your classroom and the school grounds to gain points. Fail to do these things, and you will lose points.

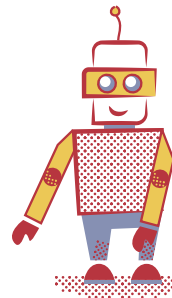
Social awareness

Respect towards your teachers and classmates is important, and good manners cost nothing. Show these traits to gain points. Show disrespect, or behave poorly towards the people around you, and you will lose points.



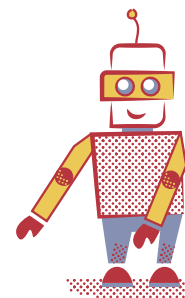
WHICH TEAM

WILL BE YOURS?



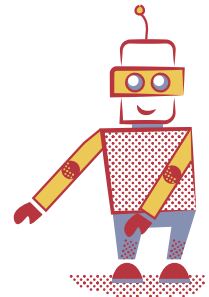


Our green team of little mythical creatures. Pixies are considered to be concentrated particularly in the high moorland areas around Devon and Cornwall.



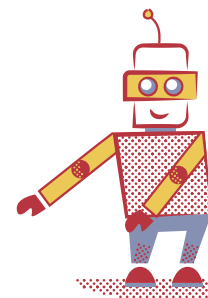


Our Blue team represented by a Porbeagle, a species of mackerel shark, distributed widely in the cold and temperate marine waters of Cornwall, UK.



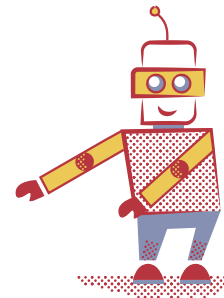


The Yellow team of Bats. A more ancient Cornish dialect word for bat is Airymouse, don't you think it's equally lovely :)





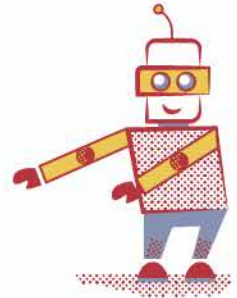
Our Red team of Cornish Giants. There is a saying, that SUL's founder, Christopher, is also a giant. It is he who is shown on the crest of this house. You don't actually have to be very tall to be in this house, but you have to have the heart of a Giant, in order to become a member of this team.



LOCATIONS

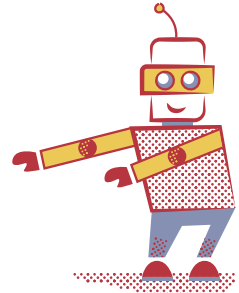


1. Queen's College, Taunton, UK
2. Abbey College, Malvern, UK
3. Dallas Baptist University, Dallas, Texas, US
4. Huizhou, China
5. Colegio Hispanico, Granada, Spain



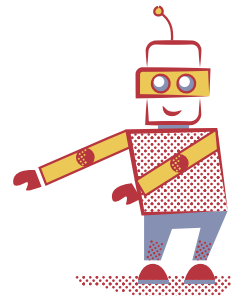


LOCATION:
TAUNTON, UK





PROGRAMMES AT QUEEN'S COLLEGE:

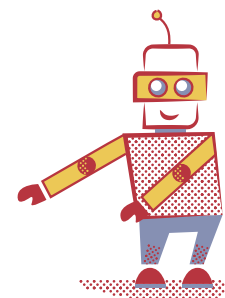




LOCATION: MALVERN, UK

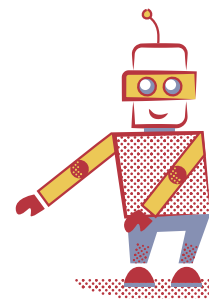


ABBEY COLLEGE
IN MALVERN
abbeycollege.co.uk



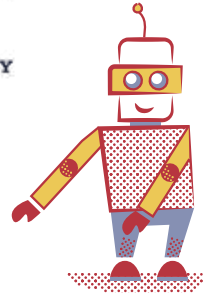


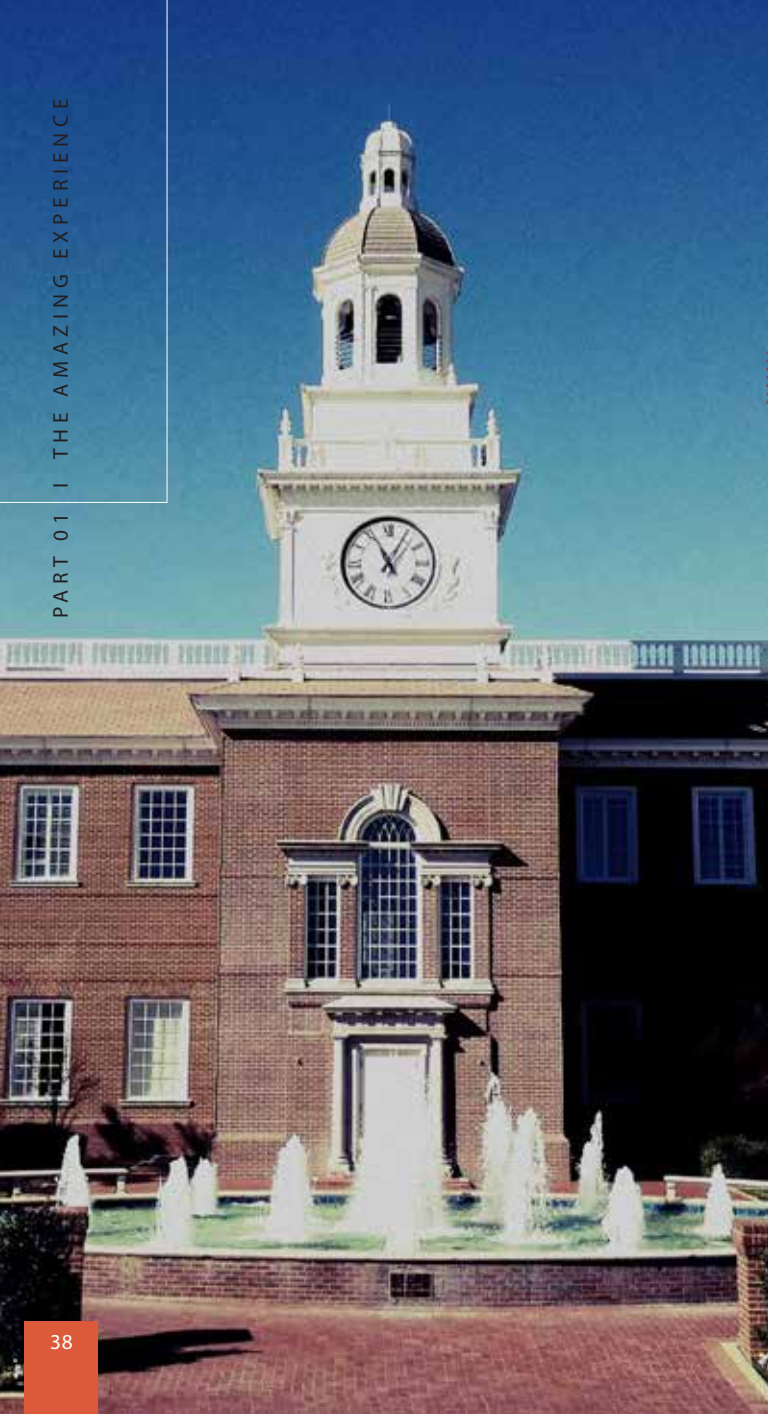
PROGRAMMES AT ABBEY COLLEGE:



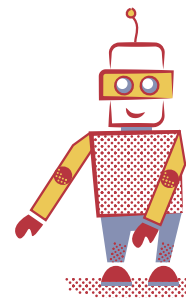


LOCATION:
DALLAS, TEXAS, US



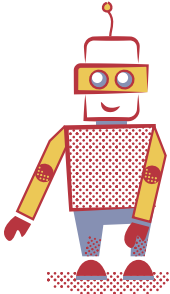
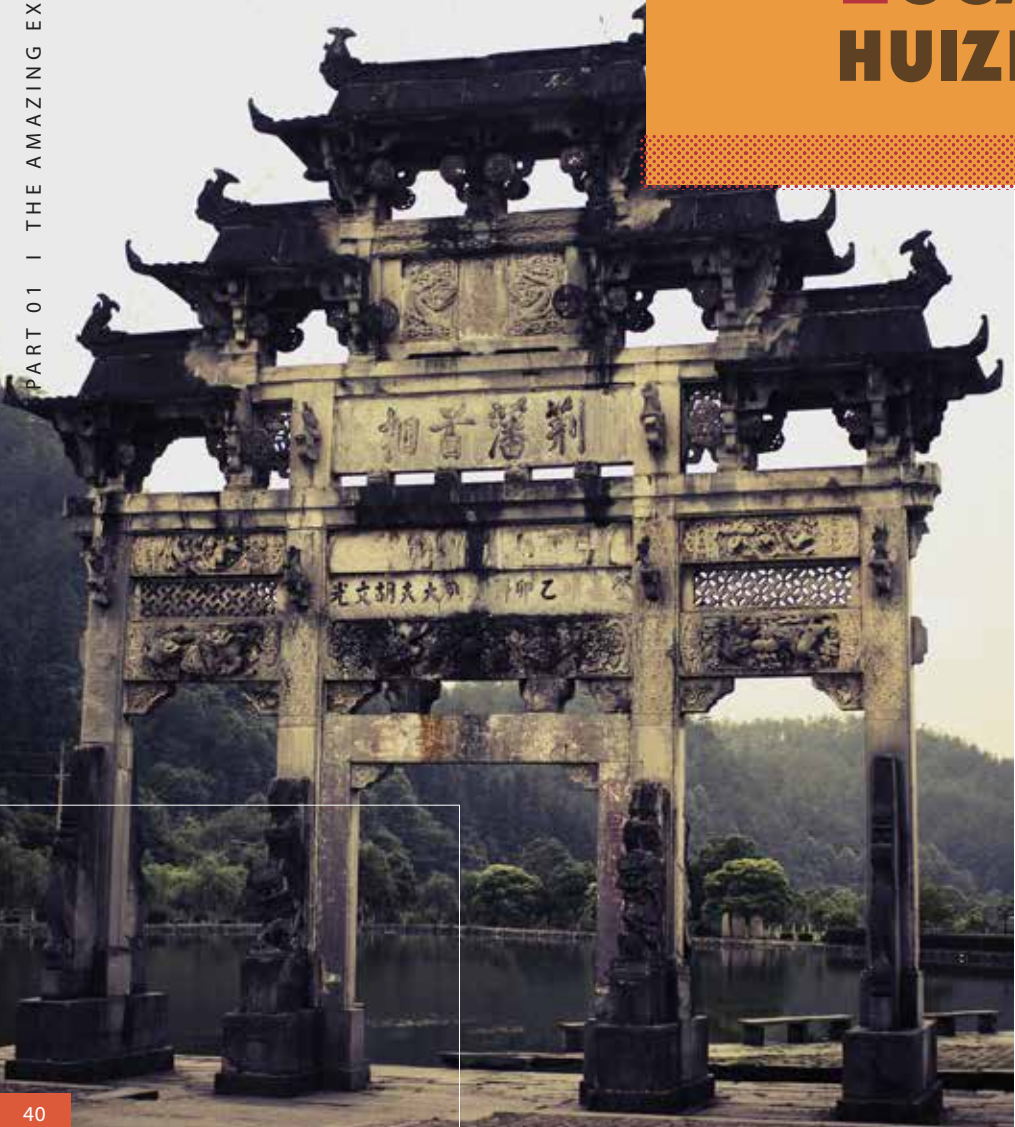


PROGRAMMES AT DALLAS BAPTIST UNIVERSITY





LOCATION: HUIZHOU, CHINA

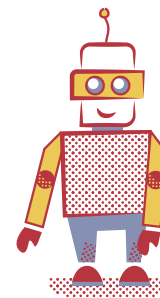




PROGRAMMES IN HUIZHOU:



PROFESSIONAL
BASKETBALL
EXPERIENCE

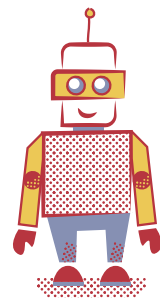




LOCATION: GRANADA, SPAIN



Colegio Hispánico
Spanish Courses

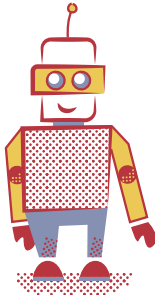


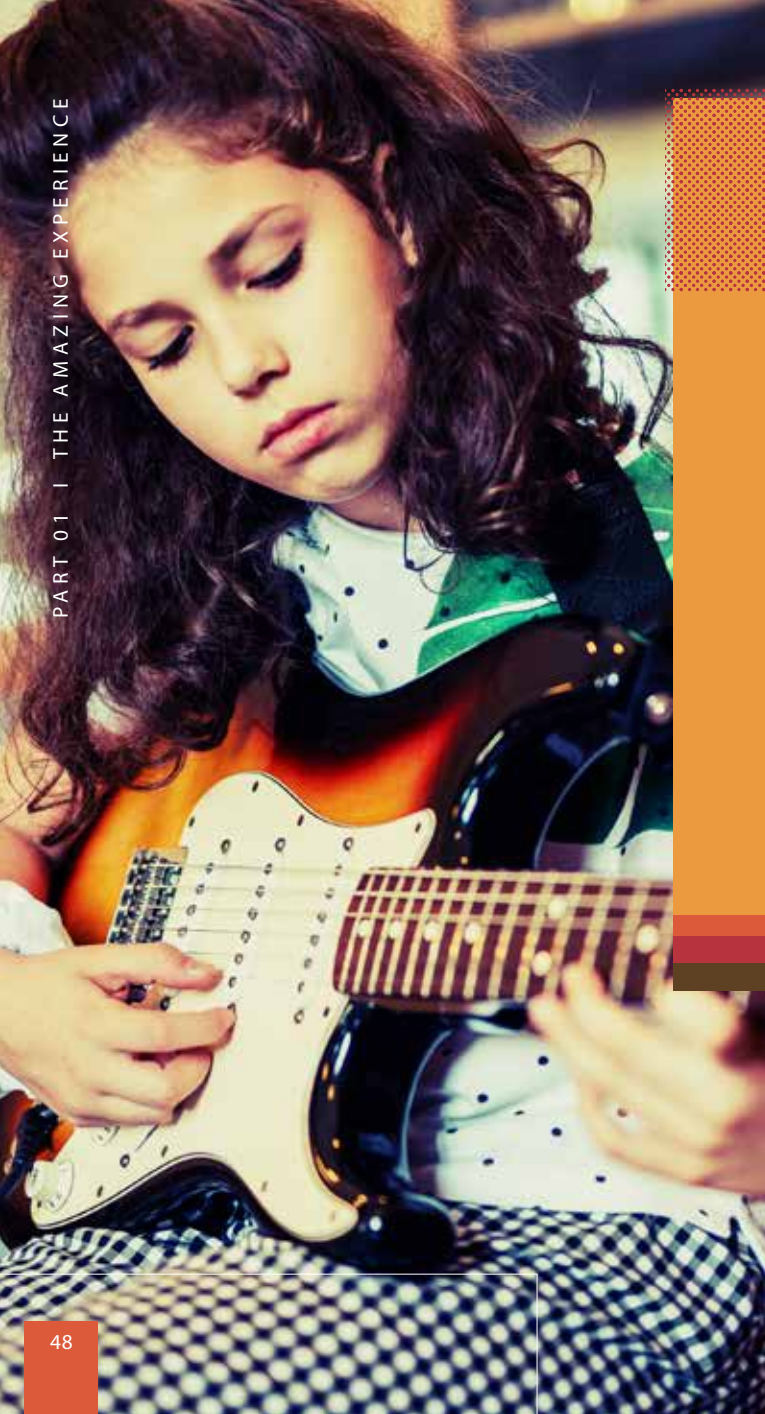


PROGRAMMES AT COLEGIO HISPANICO:

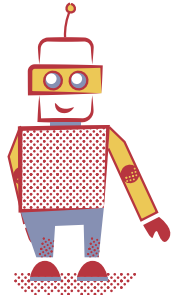


PROFESSIONAL
BASKETBALL
EXPERIENCE



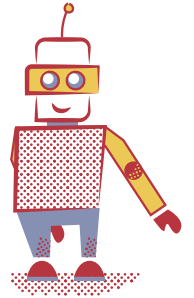


PROGRAMMES





 **EDUCATION
IS
GREAT**
BRITAIN & NORTHERN IRELAND





SUL's Great Britain Experience programme is a perfect choice for international junior students age 8+ seeking a truly British experience. It combines on-campus English lessons with action-packed daily activities and excursions outside the classroom. These provide a wealth of history, culture and interesting places to enjoy.

The programme runs in our two summer centres at Queen's College, Taunton and Abbey College, Malvern.

WELCOME TO GREAT BRITAIN!

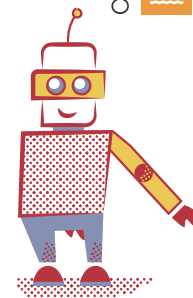
	LOCATION 1	Queen's College, Taunton, Somerset, England
	DATES	05 July - 16 August, 2020
	LOCATION 2	Abbey College, Malvern, England
	DATES	14 June - 23 August, 2020
	CAPACITY	200 students
	AGES	8-12 and 13-17 years old
	LESSONS	20 lessons of English tuition per week
	CLASS	Max 15 students per class
	TEACHERS	Fully qualified, experienced English language and Robotics teachers
	ACTIVITIES	2 full-day excursions per week (if no departure) 2 half-days off campus per week 3 half-days on campus per week
	ESSENTIALS	SUL League Integration with Native English Speakers

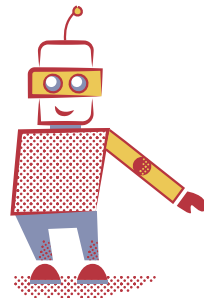
Accommodation



On-site facilities

In partnership with:







Welcome to Texas. SUL's Texas Experience programme is a choice for international junior students age 8+ seeking a genuine, original Texan experience. exciting daily events and trips, away from the classroom. These provide a fascinating glimpse of life in Texas.

Texas is a state spanning an area larger than many countries. The 'Lone Star State' has a rich history to learn about, combined with an ultra-modern present.

The programme runs in our summer centre at Dallas Baptist University in Dallas, Texas, US.

	LOCATION	Dallas Baptist University, Dallas, Texas, US
	DATES	12 July - 09 August, 2020
	CAPACITY	100 students
	AGES	8-12 and 13-17 years old
	LESSONS	20 lessons of English
	CLASS	Max 15 students per class
	TEACHERS	Fully qualified, experienced English language
	ACTIVITIES	2 full-day excursions per week (if no departure) 2 half-days off campus per week 3 half-days on campus per week
	ESSENTIALS	SUL League

Accommodation

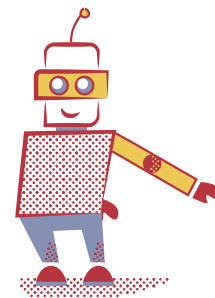


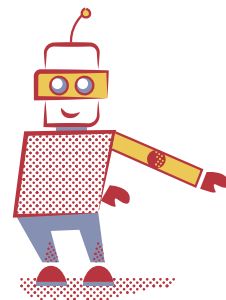
On-site facilities



HOWDY!

In partnership with:







CHINA EXPERIENCE

非凡中华体验

In 2020, SUL Education, in partnership with Yingde Education Consulting, will be running Great China Experience programme for juniors in the beautiful city of Huizhōu (惠州)

Huizhōu is a city in the prosperous south-east Guangdong Province, China. It forms part of the Pearl River Delta megalopolis. This city of about 4.6 million inhabitants is famous for its beautiful natural environment, located on the edge of the West Lake, surrounded by wooded hills which are nature reserves.

SUL's China Experience programme is a great choice for international junior students age 8+ seeking to experience true Chinese culture. It combines on campus Mandarin or English lessons with daily fun-filled activities and outings to experience the real history and culture of China.

	LOCATION	Huizhōu, Guangdong Province, China
	DATES	05 July - 02 August, 2020
	CAPACITY	250 students
	AGES	8-12 and 13-17 years old
	LESSONS	20 lessons of English/ Chinese (Mandarin) tuition per week
	CLASS	Max 15 students per class
	TEACHERS	Fully qualified, experienced English/Chinese (Mandarin) language teachers
	ACTIVITIES	2 full-day excursions per week (if no departure) 2 half-days off campus per week 3 half-days on campus per week
	ESSENTIALS	SUL League Integration with Chinese (Mandarin) Native Speakers

NĪ HǎO - 你好

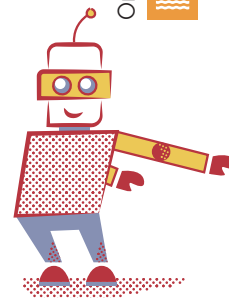
In partnership with:

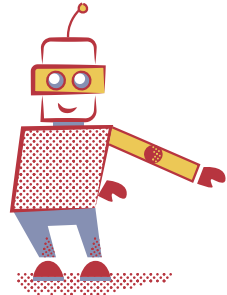


Accommodation



On-site facilities







SPANISH EXPERIENCE

Hola! to our new Great Spanish Experience programme in the cultural city of Granada!

International junior students age 8+ seeking a true Spanish experience can join SUL's and Colegio Hispanico's joint summer programme in the heart of Granada.

It combines on campus Spanish or English lessons with daily activities and plenty of fun-packed daytrips to explore the beauty and culture of this unique area.

Granada is situated in the eastern region of Andalucia. It's characterised by its scenic diversity and architectural beauty with a rich and distinguished history that shines from the city.

In partnership with:



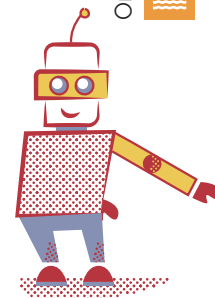
Colegio Hispanico
Spanish Courses

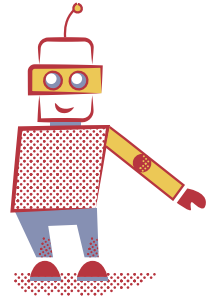
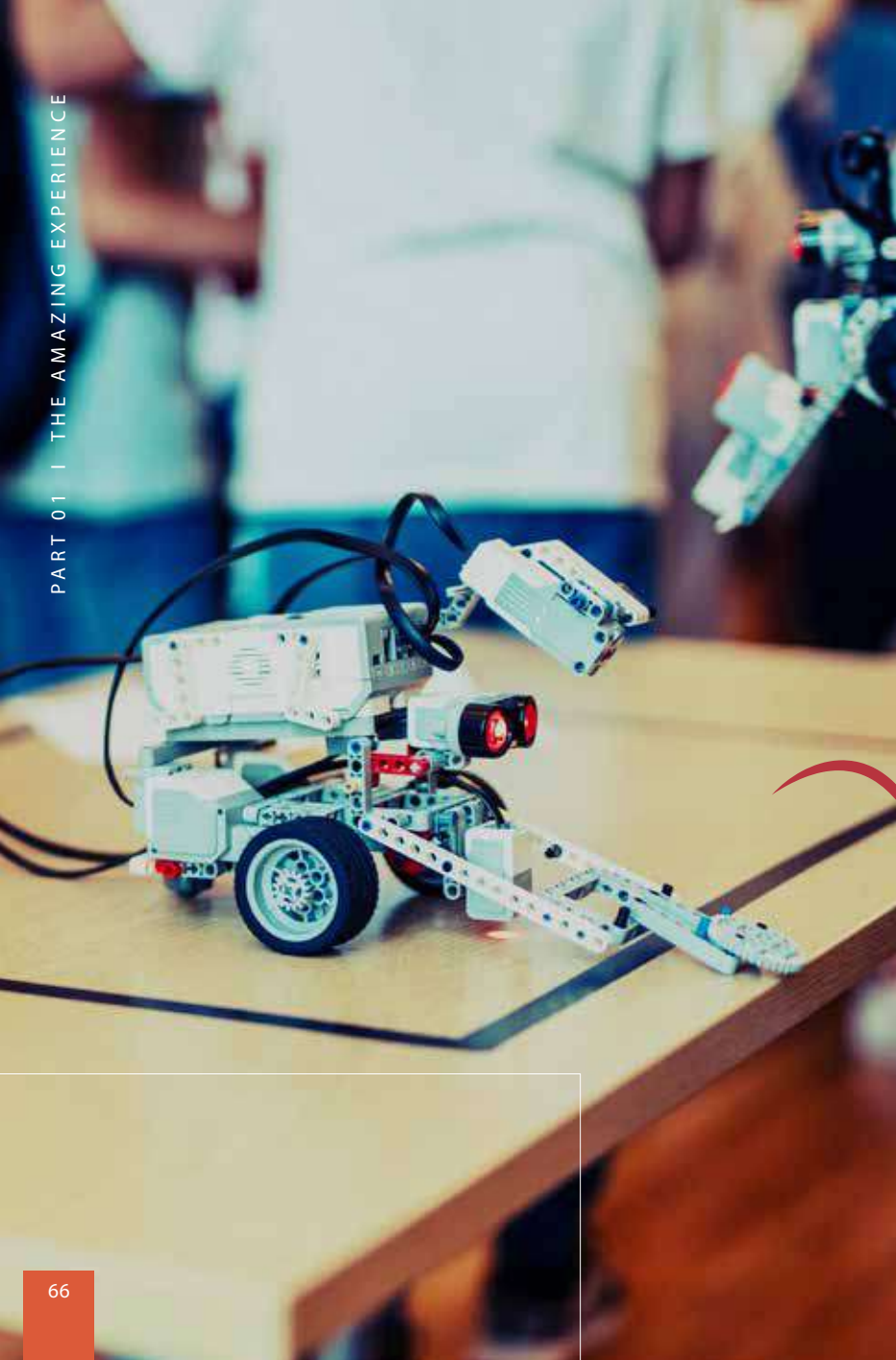
	LOCATION	Colegio Hispanico, Granada, Spain
	DATES	05 July - 02 August, 2020
	CAPACITY	100 students
	AGES	8-12 and 13-17 years old
	LESSONS	20 lessons of Spanish/English tuition per week
	CLASS	Max 15 students per class
	TEACHERS	Fully qualified, experienced Spanish/English language teachers
	ACTIVITIES	2 full-day excursions per week (if no departure) 2 half-days off campus per week 3 half-days on campus per week
	ESSENTIALS	SUL League

Accommodation



On-site facilities





From our regular daily life to cutting-edge technology, Robotics Summer Lab offers an astonishing quest to explore the wonders of robotics through this Amazing Experience.

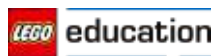
In cooperation with the Robotics Academy, we have designed this combined English and Robotics summer programme to help younger students learn English while developing the core concepts of problem solving and programming.

This course is ideally suited for children who love to be creative and find their own solutions to problems.

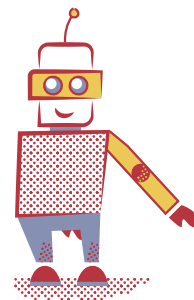
Every day our students will be able to build their own LEGO robots and use them to solve everyday problems and answer questions. Students will be given the opportunity of using their own creativity to improve on a robot's basic design, all the while learning more and more advanced concepts.

Every week will be packed with fun, excursions and exciting challenges, which test the limits of the students' robots - such as getting through mazes, navigating obstacles, battling other robots and much, much more!

In partnership with:

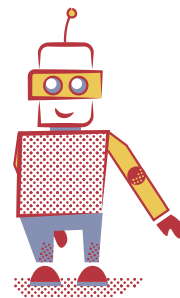


LOCATION 1	Queen's College, Taunton, Somerset, England
DATES	05 July - 16 August, 2020
LOCATION 2	Abbey College, Malvern, England
DATES	14 June - 23 August, 2020
LOCATION 3	Huizhōu, Guangdong Province, China
DATES	05 July - 02 August, 2020
LOCATION 4	Colegio Hispanico, Granada, Spain
DATES	05 July - 02 August, 2020
AGES	8-12 and 13-17 years old
LESSONS	30 lessons of English/ Spanish/Chinese (Mandarin) + Robotics tuition per week
CLASS	Max 15 students per class
TEACHERS	Fully qualified, experienced Language and Robotics teachers
ACTIVITIES	2 full-day excursions per week (if no departure) 2 half-days off campus per week 3 half-days on campus per week
ESSENTIALS	SUL League





Nintendo
CREATIVITY
WORKSHOP

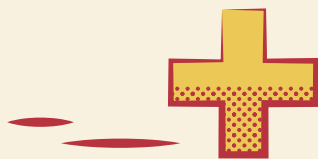


Get creative and make yourself stand out! Nintendo Creativity Workshop goes far beyond regular English + Information technology courses. Actually, students will use the computers less than during their everyday life.

In cooperation with the Robotics Academy, we have designed this English language, creativity and I.T summer programme to help younger students learn English while developing the core concepts of problem solving, as well as principles of engineering, physics, and basic programming. This course is ideally suited to the younger genera-

tion who love to be creative and find their own solutions to problems. Every week our students will be able to create and build their own DIY kits, which are crafted to work with Nintendo Switch. Students will be building creations from cardboard and bringing them to life by programming their console, which they will receive upon arrival.

Every week will be packed with fun, excursions and exciting challenges. All students at our creativity course will have an opportunity to discover how I.T can be used in our regular life and how it all works together. Students will free their curiosity and start exploring!



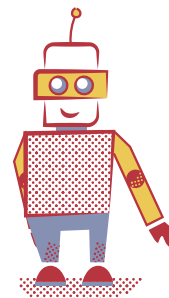
In partnership with:



LOCATION	Queen's College, Taunton, Somerset, England
DATES	05 July - 16 August, 2020
LOCATION	Abbey College, Malvern, England
DATES	14 June - 23 August, 2020
LOCATION	Dallas Baptist University, Dallas, Texas, US
DATES	12 July - 09 August, 2020
LOCATION	Huizhōu, Guangdong Province, China
DATES	05 July - 02 August, 2020
LOCATION	Colegio Hispanico, Granada, Spain
DATES	05 July - 02 August, 2020
AGES	8-12 and 13-17 years old
LESSONS	30 lessons of English/Spanish/Chinese (Mandarin) + Coding + Creativity tuition per week
CLASS	Max 15 students per class
TEACHERS	Fully qualified, experienced Language and Coding teachers
ACTIVITIES	2 full-day excursions per week (if no departure) 2 half-days off campus per week 3 half-days on campus per week

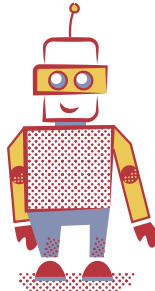


Included*





MUSIC AL WAYS



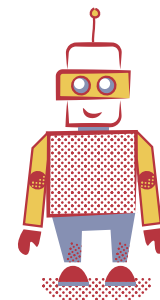
Our Amazing Experience Programme in 2020 is offering a cohesive English and singing skills course for all students from 8 to 17-years-old. It is our aim to provide a music course for our International students which will help them be able to join a group (a band or choir), or to perform individually.

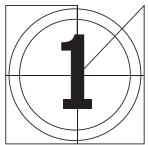
Music is an art form in which many different skills, cultures and forms of creativity come together. At SUL we create an environment where music is always present. Children will be educated to develop their singing skills, whilst at the same time being encouraged to use music as a creative outlet in their lives.

Students will have the opportunity to explore music in engaging new ways, develop musical skills, learn hands-on games and warm-ups and work collaboratively. Our students will give group and individual performances on a weekly basis to the participants of The Amazing Experience Programme at Queen's College.

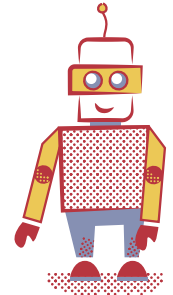
LOCATION	Queen's College, Taunton, Somerset, England
DATES	05 July - 16 August, 2020
CAPACITY	20 students
AGES	8-12 and 13-17 years old
LESSONS	20 lessons of English tuition per week 10 music lessons per week 2 individual music lessons per week
CLASS	Max 15 students per class
TEACHERS	Fully qualified, experienced English language and Music teachers
ACTIVITIES	2 full-day excursions per week (if no departure) 2 half-days off campus per week 2 half-days on campus per week
TRAVEL	Exeter (30 min.), Bristol (1 h.), London Heathrow (2 1/2 h.), Plymouth (1 1/2 h.)
ESSENTIALS	SUL League Integration with English Native Speakers 1 public performance at Queen's Hall per week

In partnership with:





TAKE MOVIE



"They did that in one take" is always an impressive statement to make about any film! Getting a scene down in a single take however, can mean everyone involved experiences a moment of perfect execution, or just pure luck, and the scene is completed on the first try.

SUL will run this exciting One Take Movie programme in 2020. We are proud to provide young filmmakers, ages 12 to 19, with a unique experience in the art of cinema.

Incorporating both theory and practice, our courses will teach students how to operate equipment and work on a set while providing a clear understanding of the fundamentals of how the art of cinema works.

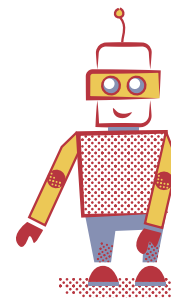
At the end of our course, students will have written, filmed and edited a high-quality One Take Movie type film which we will premiere on SUL's YouTube channel.



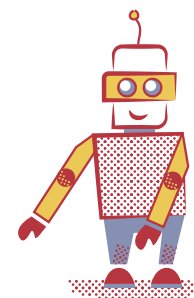
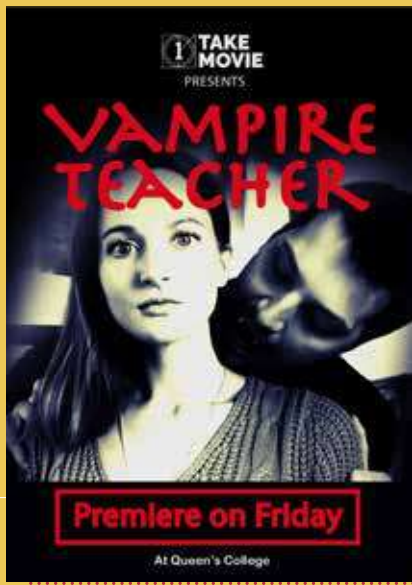
In Partnership with:

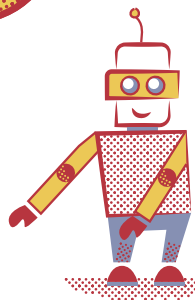


LOCATION 1	Queen's College, Taunton, Somerset, England
DATES	05 July - 16 August, 2020
LOCATION 2	Abbey College, Malvern, England
DATES	14 June - 23 August, 2020
LOCATION 3	Dallas Baptist University, Dallas, Texas, US
DATES	12 July - 09 August, 2020
LOCATION 4	Huizhōu, Guangdong Province, China
DATES	05 July - 02 August, 2020
LOCATION 5	Colegio Hispanico, Granada, Spain
DATES	05 July - 02 August, 2020
CAPACITY	20 students
AGES	12-17 years old
LESSONS	30 lessons of English/Spanish/Chinese (Mandarin) + One Take Movie tuition per week
CLASS	Max 15 students per class
ACTIVITIES	2 full-day excursions per week (if no departure) 2 half-days off campus per week 3 half-days on campus per week



2019 MOVIES 2019 MOVIES 2019 MOVIE





We are proud to present our English and Basketball summer camp - The Dallas Mavericks Experience. Basketball is NBA, so there is no better place to organise this than the country where this sport belongs.

It seems nothing could make the game any better, that is until you experience it in a different way. That is why in 2020, SUL Education, in partnership with NBA club Dallas Mavericks, will be running their joint International summer camp for juniors in Dallas, Texas.

In partnership with:

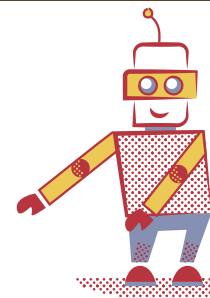


Dallas Mavericks professional coaches are handpicked for their basketball knowledge and ability to work well with kids. All players learn the fundamentals of the game. Meanwhile, SUL Education is going to teach students to communicate in English with other teammates and coaches while learning sportsmanship and personal responsibility.

Our students will be staying at Dallas Baptist University. The campus provides the accommodation facilities for our Professional Basketball Experience summer programme designed to educate and inspire participants in a variety of academic, athletic, and extracurricular endeavors.

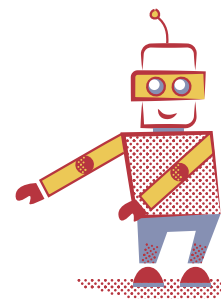
Combining excellent coaching and a proven programme focused on each student, Dallas Mavericks and SUL Education will deliver valuable lessons and plenty of fun!

LOCATION	Professional Basketball Practice Facility + Dallas Baptist University, Dallas, Texas, US
DATES	12 July - 09 August, 2020
CAPACITY	100 students
AGES	8-12 and 13-17 years old
LESSONS	20 lessons of English tuition per week
PRACTICE	20 hours practice with Professional Basketball coaches per week
CLASS	Max 15 students per class
TEACHERS	Fully qualified, experienced English language teachers Teachers are native English speakers
COACHES	Professional coaches are handpicked for their basketball knowledge and ability to work well with junior students
ACTIVITIES	1 full-day + 1 half-day excursions per week Evening on-campus activities
MERCHANDISE	Jersey, shorts, drawstring bag, t-shirt, socks and cap





PROFESSIONAL
BASKETBALL
EXPERIENCE



We are proud to present our English and Basketball summer camps: The Professional Basketball Experience.

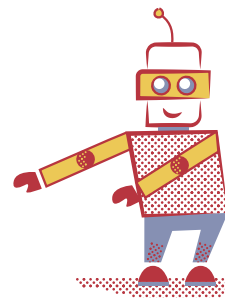
In 2020, SUL Education in partnership with International Basketball University will be running International summer camps for juniors in Huizhou, Guangdong, China and Granada, Spain.

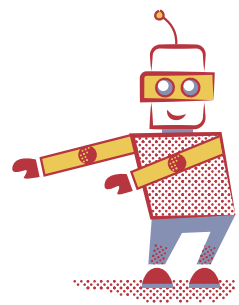
Professional basketball coaches are handpicked for their professional knowledge and ability to work well with young learners. All players learn the fundamentals of the game. Meanwhile, SUL Education will teach students to communicate in English, Mandarin or Spanish with other teammates and coaches while learning sportsmanship and personal responsibility.

Combining excellent coaching and a proven programme focused on each student, SUL Education and the International Basketball University will deliver valuable lessons and plenty of fun!

LOCATION	Huizhōu, Guangdong Province, China
DATES	05 July - 02 August, 2020
LOCATION	Colegio Hispanico, Granada, Spain
DATES	05 July - 02 August, 2020
AGES	8-12 and 13-17 years old
LESSONS	20 lessons of English tuition per week
PRACTICE	20 hours practice with Professional Basketball coaches per week
CLASS	Max 15 students per class
TEACHERS	Fully qualified, experienced Language teachers
COACHES	Professional coaches are handpicked for their basketball knowledge and ability to work well with junior students
ACTIVITIES	1 full-day + 1 half-day excursions per week Evening on-campus activities
MERCHANDISE	Jersey, shorts, drawstring bag, t-shirt, socks and cap

In Partnership with:



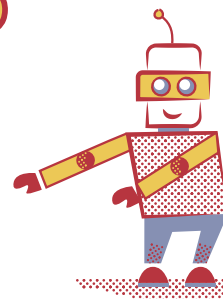




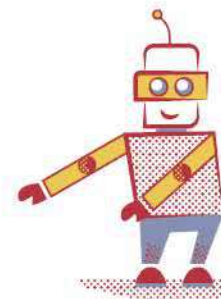
**ENJOY THE WONDER
OF EDUCATION BY
TRAVELLING THE GLOBE
AFLOAT. ON EFFORTLESS
ADVENTURES TO
BREATH-TAKING NEW
HORIZONS, FORGE
LIFELONG FRIENDSHIPS
AND MEMORIES. IN 2020
DISCOVERY EXPERIENCE
COURSES WILL TAKE
PLACE ON BOARD THE
MSC PREZIOSA.**

MSC Preziosa is a Fantasia-class cruise ship owned and operated by MSC Cruises. She entered service in March 2013. MSC Preziosa is 333 m (1,092.52 ft) long, the moulded breadth of the hull 37.92 meters and the draught at 8.45 meters. She accommodates up to 4,363 passengers with a crew complement of 1,325. She has 13 passenger decks, which contain 1,310 outside cabins and 327 inside cabins. Her speed is quoted at 23 knots (43 km/h; 26 mph).

MSCPREZIOSA



24 July - 04 August, 2020	DATES
Hamburg, Germany	EMBARKATION PORT
MSC Preziosa	SHIP
Germany, United Kingdom, Iceland	ITINERARY
12 Days, 11 Nights	COURSE DURATION
100 Students	CAPACITY
10-17 Years Old	AGES
40 Lessons of English Tuition	LESSONS
Max 15 students per class	CLASS
Fully Qualified English Language Teachers	TEACHERS
Full Board, Triple, Quadruple	ACCOMMODATION



ISAFJORDUR AKUREYRI

ICELAND

REYKJAVIK

LERWICK

INVERGORDON

UNITED KINGDOM
HAMBURG

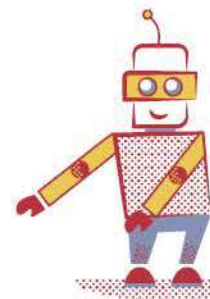
In Partnership with:



04 - 18 August, 2020	DATES
Hamburg, Germany	EMBARKATION PORT
MSC Preziosa	SHIP
Germany, Norway, Svalbard and Jan Mayen Islands	ITINERARY
15 Days, 14 Nights	COURSE DURATION
100 Students	CAPACITY
10-17 Years Old	AGES
40 Lessons of English Tuition	LESSONS
Max 15 students per class	CLASS
Fully Qualified English Language Teachers	TEACHERS
Full Board, Triple, Quadruple	ACCOMMODATION



In Partnership with:



PART

02

**HOME
TUITION**



WHY CHOOSE A SUL HOME TUITION COURSE?

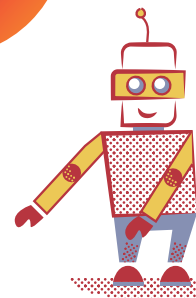
SUL provides a selection of one-to-one home tuition courses for young learners and adults.

SUL Home Tuition courses are fully integrated, linking English tuition with daily life, student activities and being a part of the local community. Students usually learn quickly from being fully immersed into an English speaking home whilst experiencing British life first-hand.

SUL personalises each home tuition course based on the student's individual interests, aims and requirements. This ensures they gain the most from their experience and receive a challenging and enjoyable course.

What you can expect from a SUL Home Tuition Course:

- ✓ Pre-arrival online assessment test
- ✓ A carefully selected, friendly & caring tutor
- ✓ Student welcome pack on arrival
- ✓ Full board accommodation
- ✓ An in-depth experience of British culture, life & customs
- ✓ Lessons with a professional and welcoming English teacher
- ✓ Needs analysis, personalised tuition & excursion programme
- ✓ Interesting visits & activities
- ✓ Lots of English communication practice
- ✓ A certificate and progress report
- ✓ Student insurance whilst in the UK
- ✓ An enjoyable and rewarding experience



SUL gives the highest priority to student welfare:

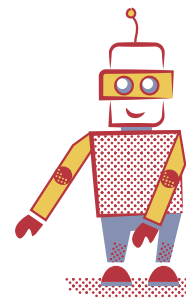
- ✓ **24 hours a day dedicated student care**
- ✓ **Designated child safeguarding officers**
- ✓ **Local organiser support**
- ✓ **24 hour emergency phone number**
- ✓ **Regular inspections to maintain high standards**



HOME TUTORS

SUL home tutors are friendly, welcoming and consistently supported by our SUL academic team. They are only selected to work for SUL after a personal interview at home. We make appropriate checks before accepting a tutor and their family, re-checking on a regular basis.

We have a wide selection of home tutors at SUL so we can always find a good match for each of our students, with a host that meets their preferences and shares similar interests. From families with children to retired couples, those without pets or those with horses, SUL will supply the most suitable tutor.

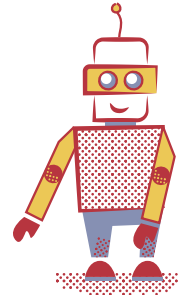


MEET SOME OF OUR

HOME TUTORS



Emma lives in the beautiful region of Fowey on the south coast of Cornwall. She lives with her husband Scott and two boys, Louis who is 11 and Sonny who is 8. She runs her own photography business from home, while Scott runs a very busy and popular restaurant called Sams, just 5 minutes walk from home. 'We are a dynamic, outdoor loving family and often take a picnic to the beach nearby with the bodyboards, build a fire and toast marshmallows'.





HELLO!

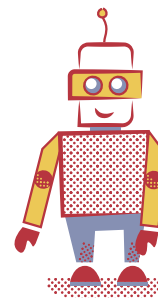
Karen is an English teacher and home tutor. She also teaches piano lessons and enjoys playing the piano. Karen runs a company which goes into schools, teaching families on big craft workshops. She also helps in the Sunday school at her local church. Her family of 5 enjoys going to the cinema, visiting places of interest and trying out new restaurants. They live in Chippenham which is a small market town with a history dating back to the 9th century when King Alfred had his hunting lodge in the area. They often visit Bath and Lacock Abbey, which are very close to their home.

Valerie lives in a small village in the Herefordshire countryside with beautiful views across to the Welsh mountains. She enjoys cycling, playing the piano and learning French. Having lived in both Africa and Asia, Valerie and her husband now enjoy holidaying in France. Students who stay with Valerie have many medieval market towns and villages to visit including Ludlow with its 11th century castle, the historic city of Hereford and Worcester where visitors can take a river boat ride. "I love to welcome students to my home and enrich their understanding of English culture".

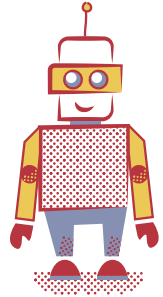
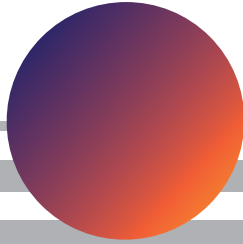
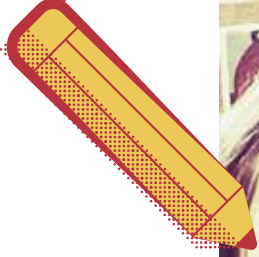
Deb has been hosting and teaching international students for over 11 years. She is an English teacher and has worked at a secondary school. Deb and her two teenage children live in a beautiful house near the old town of Malmesbury. Deb likes walking her little dog, writing poetry and reading.

As a family they enjoy swimming, walking and visiting local places of interest e.g. Roman Cirencester, the city of Bath or the SS Great Britain in Bristol. "Hosting and teaching is like painting rainbows on the landscape of life".

Hi!



COURSES FOR YOUNG LEARNERS



GENERAL BRITISH ENGLISH

AGE
RANGE12-17
YEARSENGLISH
LEVELSUITABLE FOR ELEMENTARY TO
ADVANCED STUDENTS (A1 - C1)

A SUL General English Home Tuition programme is a fantastic way to motivate teenagers and young learners to focus on their English. Our students will spend the whole day with their welcoming tutor so it is necessary for them to use English for real life, authentic purposes.

Course Objective: To improve English language knowledge and communication skills, as well as build self-confidence.

10, 15, 20 or 25 hours of one-to-one English tuition per week

Use English in authentic situations

2 half-day local excursions per week

1 full-day weekend excursion for courses of 2 weeks or more

ENGLISH FOR ACADEMIC PURPOSES

AGE
RANGE12-17
YEARSENGLISH
LEVELSUITABLE FOR ELEMENTARY TO
ADVANCED STUDENTS (B1 - C1)

An 'English for Academic Purposes' home tuition course can help students focus specifically on improving their English skills for success in subjects such as Maths, Science or a combination of subjects.

Course Objective: To improve English language, vocabulary, and academic skills for specific school subjects.

15, 20 or 25 hours of one-to-one English tuition per week

2 half-day excursions per week in the local area

1 full-day weekend excursion for courses of 2 weeks or more

ENGLISH EXAM PREPARATION

AGE
RANGE12-17
YEARSENGLISH
LEVELSUITABLE FOR ELEMENTARY TO
PROFICIENCY STUDENTS (A1 - C2)

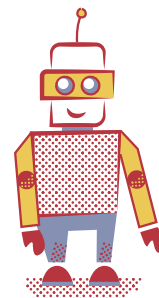
Examinations such as IELTS, FCE and CAE prove to the world that you are competent in English. The SUL English Exam Preparation Course provides tuition in aspects of the exam that students need most, including exam techniques, vocabulary expansion and grammar improvement. The total immersion environment means that the student is constantly practising and improving their English, helping prepare for a successful result in any English examination.

Course Objective: To improve English skills for success in specific language exams.

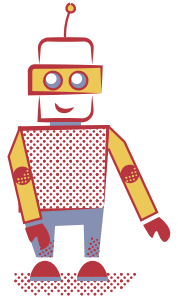
15, 20 or 25 hours of one-to-one English tuition per week

2 half-day excursions per week in the local area

1 full-day weekend excursion for courses of 2 weeks or more



COURSES FOR ADULTS



ENGLISH FOR PROFESSIONS

AGE
RANGE

18+
YEARS

ENGLISH
LEVEL

SUITABLE FOR INTERMEDIATE TO
PROFICIENCY STUDENTS (B1 - C2)

English is now a required skill in many industries. As SUL's home tutors have various career backgrounds, we are able to match you with a tutor who can help you improve in areas of specialist English.

Our students enjoy their learning experience, with tutors who share an interest in the same profession.

Course Objective: To improve language in specialist areas of English for career advancement. Also, to improve language for business communication, including presentations, meetings and socialising with clients.

Specialist areas may include:

English for travel & tourism
English for engineering
English for media
English for academic purposes
English for the performing arts
English for teachers

BUSINESS ENGLISH

AGE
RANGE

18+
YEARS

ENGLISH
LEVEL

SUITABLE FOR INTERMEDIATE TO
PROFICIENCY STUDENTS (B1 - C2)

Fluent and accurate English is one of the most important employability skills, much sought after in the corporate world. SUL's home tutors have a variety of business experience so we are able to match you with a tutor who can best help you with your business English needs.

Course Objective: To improve language in specialist areas of English for career advancement. Also, to improve language for business communication including presentations, meetings and socialising with clients.

Professional or business needs analysis to tailor the course to your communication needs

15, 20 or 25 hours of one-to-one English tuition per week

2 half-day excursions per week in the local area

1 full-day weekend excursion for courses of 2 weeks or more

ENGLISH FOR TEACHERS

AGE
RANGE

18+
YEARS

ENGLISH
LEVEL

SUITABLE FOR INTERMEDIATE TO
PROFICIENCY STUDENTS (B1 - C2)

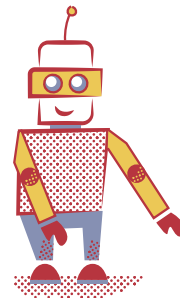
Whether you teach English or another subject, it is increasingly important for educational professionals to be able to communicate in English. We promote a CLIL (Content and Language Integrated Learning) approach to enable teachers to help students learn their regular subject content through English.

Course Objective: To improve language and skills needed for delivering effective lessons in English.

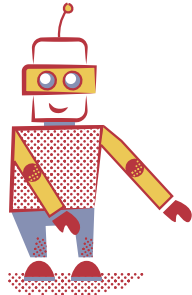
15, 20 or 25 hours of one-to-one English tuition per week

2 half-day excursions per week in the local area

1 full-day weekend excursion for courses of 2 weeks or more



ENGLISH PLUS COURSES FOR YOUNG LEARNERS OR ADULTS



AGE
RANGE12-17 / 18+
YEARSENGLISH
LEVELSUITABLE FOR INTERMEDIATE TO
PROFICIENCY STUDENTS (A2 - C2)

ENGLISH PLUS SPORT

Learn English and get active! Whether you want to improve your sport or try something new, SUL can provide you with a personalised English Plus course to suit your sporting needs.

Choose one particular sport to learn or improve on, or try our Sport Taster course where you can try up to three different activities during your stay.

Course Objective: Learn English at the same time as developing skills in sport.

ENGLISH PLUS COOKERY

This is a wonderful opportunity to learn traditional home cookery and baking, whilst learning the appropriate English alongside.

Purchase local ingredients from nearby farmers' markets for use in your cooking sessions or sample some traditional British food during a local visit.

Course Objective: Become confident in traditional home cooking whilst developing relevant vocabulary and General English skills.

10 or 15 hours of one-to-one

English tuition per week

3 sessions of your chosen sport per week

Interesting visits to get to know your local area

1 full-day excursion for courses of 2 weeks or more

Options: surfing, horse riding, golf, sailing, windsurfing, sport taster.

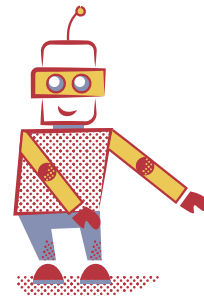
10 or 15 hours of one-to-one English tuition per week

3 sessions of traditional home cookery per week

2 half-day local visits per week

1 full-day excursion for courses of 2 weeks or more

A meal out to sample the local cuisine



AGE
RANGE12-17 / 18+
YEARSENGLISH
LEVELSUITABLE FOR INTERMEDIATE TO
PROFICIENCY STUDENTS (A2 - C2)

ENGLISH PLUS CULTURE

Discover the history, culture and traditions of beautiful British places such as Cornwall or the Cotswolds. From coast to countryside and moorland too, each region is full of historic and fascinating sites to be explored and we have many places for you to discover!

Choose 3 cultural sites to visit each week and learn the relevant vocabulary before you go. Vary your excursions depending on your chosen destination or theme your course, such as Houses & Gardens, Castles or even Rosamunde Pilcher film locations!

Course Objective: Develop general English skills with specific cultural vocabulary, whilst experiencing everything the local region has to offer.

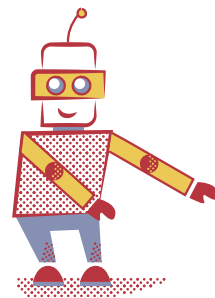
10 or 15 hours of
one-to-one English
tuition per week

3 key cultural visits
per week

Other nearby visits to get
to know your local area

1 full-day excursion for
courses of 2 weeks or
more

A meal out to sample
the local cuisine



HOME TUITION DESTINATIONS

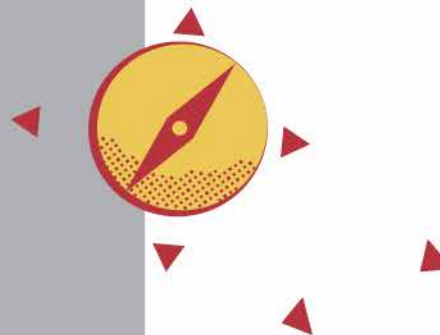


Destinations

1. Cornwall
2. Devon
3. Bristol
4. Bath
5. Wiltshire
6. Gloucestershire
7. London

Entry points

8. Gatwick airport
9. Heathrow airport
10. Luton airport
11. Stansted airport
12. Bristol airport
13. Plymouth ferry
14. Portsmouth ferry
15. Exeter Airport
16. Newquay Airport



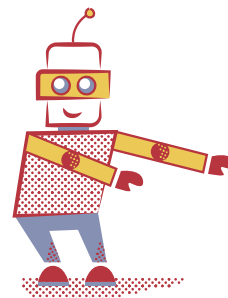
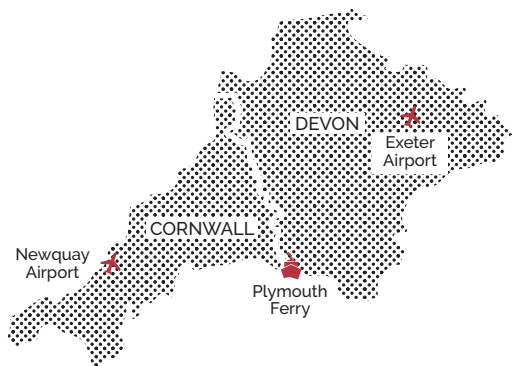
COASTAL CORNWALL & DEVON

Cornwall and Devon are located in the very south west of England. Visitors love to come here to enjoy the magical blend of beautiful coastal scenery, unspoilt villages, artists' communities and ecological wonders, together with the stories and legends of this mysterious land.

Devon and Cornwall are traditional and safe areas of England where we have very friendly home tutors, eager to share the region's delights with our students.

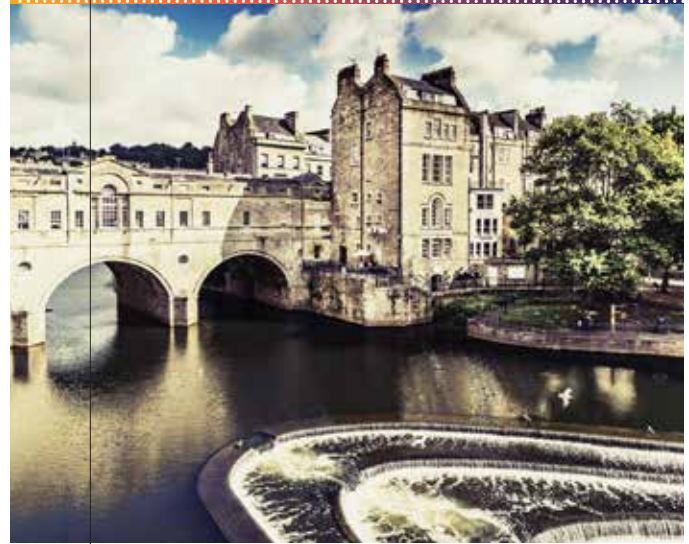


- ✓ Traditional region of England
- ✓ Friendly locals who are happy to talk to you
- ✓ Full of history, culture, beaches & beauty

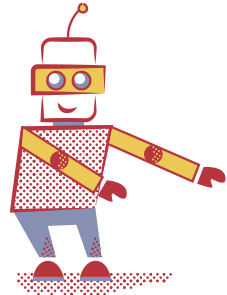


CULTURAL BATH & BRISTOL REGION

The rural counties of Somerset and Wiltshire provide a great mix of old meets new. From the historic city of Bath and prehistoric wonders of Wiltshire, to the more contemporary, arty city of Bristol, this region offers real cultural variety. Wiltshire is well known for the World Heritage Site of Stonehenge, close to ancient Avebury. Somerset also boasts a World Heritage Site, the City of Bath, famous for its Roman Baths and rich Georgian architecture. This region provides a magnificent combination of rural landscapes and bustling locations, full of interesting sights and attractions.



- ✓ A contrast of city and countryside
- ✓ A rich mix of history culture and arts
- ✓ Easy access from major UK airports



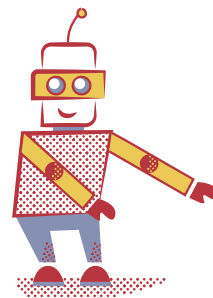
CHARMING GLOUCESTERSHIRE & THE COTSWOLDS

Gloucestershire is in the south west of England and is famous for the Cotswolds and beautiful towns such as Cheltenham. Our home tuition courses based in this area provide students with real variety. Students can enjoy the true English countryside, visit ancient towns such as Tewkesbury, as well as

shopping and sightseeing in the nearby cultural cities of Bath or Bristol. This region will provide a truly enriching home tuition experience for young or adult students.



- ✓ A balance of rural beauty, market towns and vibrant cities
- ✓ Typical English setting with lots of photo opportunities
- ✓ Visit bath or Bristol for sightseeing & shopping opportunities

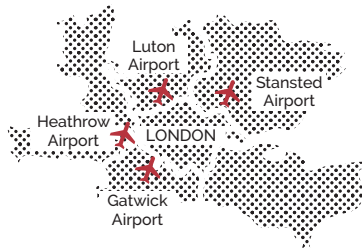


COSMOPOLITAN LONDON

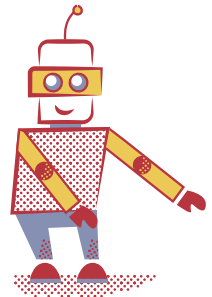
A home tuition course in London provides a wonderful opportunity to explore the capital city and its famous sights. With so much to see and do, the tutor plans a tailored programme with the student on their arrival to select places to visit that are of interest to them. The city offers great choice, full of well-known sights such as Big Ben and Buckingham Palace and outstanding museums and galleries including the British Museum and Tate Britain.

There are endless places to shop in London such as the famous Oxford Street, or markets with unique, designer or vintage shops to discover.

There is so much choice and never enough time!



- ✓ Explore the famous London sights and attractions
- ✓ Experience the history and culture of the capital city
- ✓ Enjoy the diversity of London and its many shops

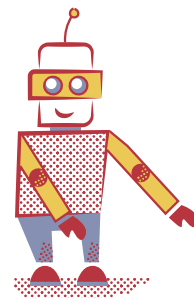


PART

03

EDUCATIONAL

VISITS

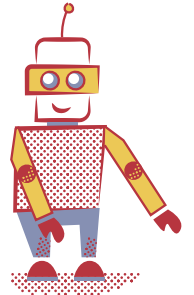




EDUCATIONAL

VISITS

Our Educational Visits provide schools with English language learning through educational and cultural experiences. We offer a range of packages, so you can choose the most suitable option for your group. Whether accommodation and tuition only, or a full English and Cultural package, our aim is for students to improve their communication skills in English in the context of British culture.



English and Cultural Courses

Typically seven nights or more, SUL English and Cultural courses integrate tuition, activities and visits to enhance learning. Students benefit from an educational and cultural experience in a unique package, offering engaging learning opportunities specific to the chosen destination.

Study Tours

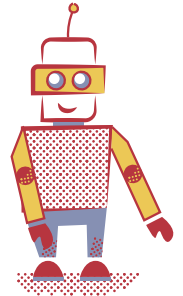
Popular with school groups, our Study Tours are teacher guided short courses of between three and six nights. Educational visits are the focus and students learn through informative and interactive learning whilst out and about. We can also link the visits and topics to the school group's existing studies.

School Integration Programme

SUL can offer a taste of English academic life, arranging for your students to spend time in a local school with British teenagers. We can offer this in Exeter, Saffron Walden and Worcester.

Accommodation + Tuition Only

Some clients prefer to arrange their activities and visits independently. In this case we can supply the accommodation and tuition only, or even just accommodation. We work with the group organiser to link tuition to your programme to provide a more valuable experience.



ENGLISH AND CULTURAL courses



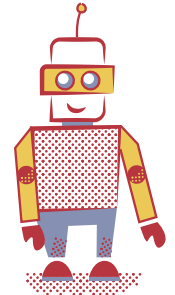
The SUL English and Culture programme is our classic UK course, popular with teenage groups, taking in the sights, sounds and tastes of the chosen location. Students typically enjoy 15 hours of General English lessons each week, incorporating cultural information to prepare for their afternoon visits.

Our teachers provide interesting and engaging information during the cultural visits plus interactive tasks to ensure learning is taking place.

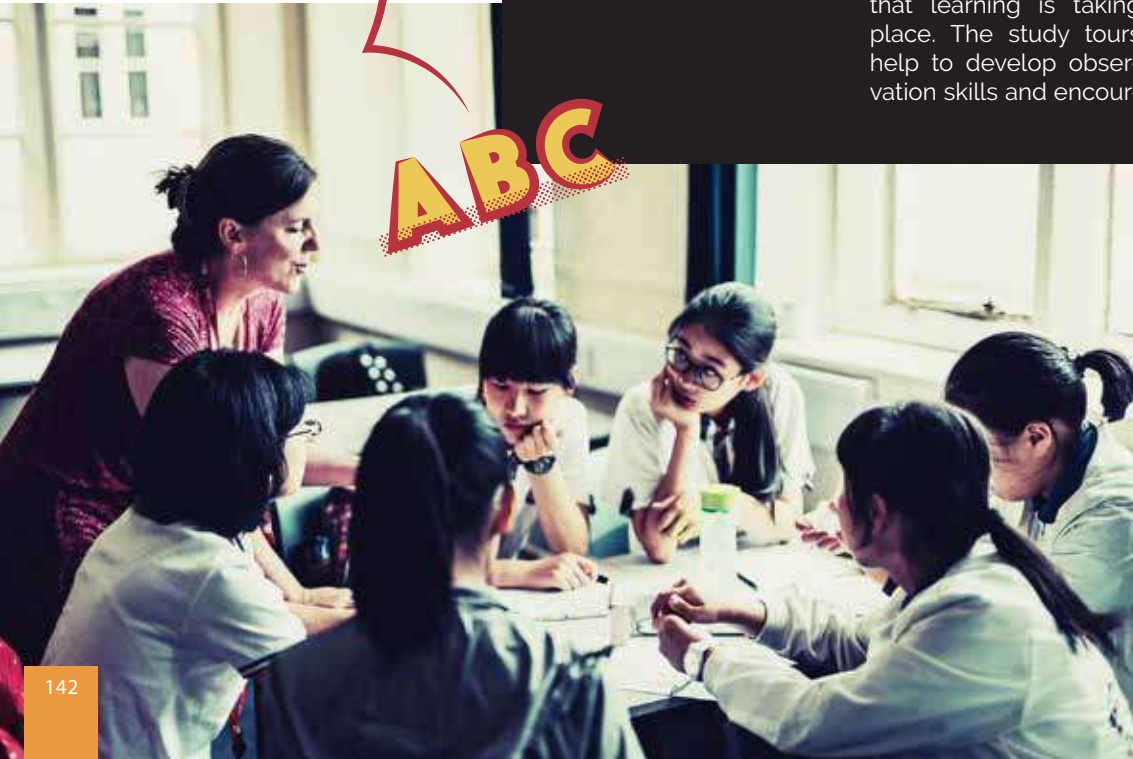
This is the perfect programme for groups who are looking for a memorable UK stay and an opportunity to improve General English skills. There is so much to see and do in our various destinations that you may be spoilt for choice.

Course Objectives:

To improve General English through cultural immersion, including memorable visits to local points of interest.



STUDY tours



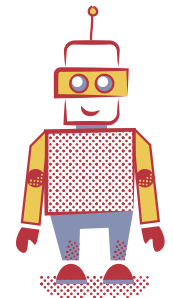
SUL Study Tours are popular with school groups looking to enrich their year round studies on topics such as British history and literature. Educational visits led by SUL teachers are the main focus of the course and we work with the group's organiser to ensure they are as informative and interactive as possible.

Students have guided tours of the points of interest and they complete tasks to ensure that learning is taking place. The study tours help to develop observation skills and encour-

age students to engage in conversation along the way. On-site activities encourage communication and link to the educational visit of the day, helping both the visit and the language learning become more memorable.

Course Objectives:

To improve English by 'doing' while engaged in educational visits and activities. To develop a wider understanding of aspects of British history, literature and traditions covered in students' year-round school curricula.

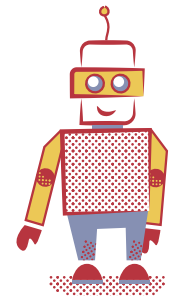


SCHOOL INTEGRATION programme

Our ground-breaking school integration programme allows teenagers to submerge themselves in British Culture, by becoming a part of the education system. For parents and group leaders, this is a great opportunity for the students to not only improve their English, but to appreciate British culture as well.

Students will be immersed fully into the school environment. They will be given a

'buddy' at the school, and sit in on all of the usual classes. This is a great way for students to learn English through different interesting topics. They will also have the opportunity to chat and socialise with their fellow students in more relaxed settings, such as lunchtimes and breaks. Students will gain a new perspective on their own education system through an immersive and stimulating experience.





GROUP COURSE destinations



SUL Residential

1. Queen's College
2. Abbey College
3. St. Albans
4. Glenalmond College
5. Stover School
6. Shebbear College
7. Taunton School



SUL Homestay

8. St. Austell
9. Exeter
10. Bristol
11. Guildford
12. Northampton
13. Worcester
14. Saffron Walden
15. Edinburgh

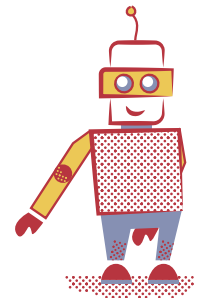
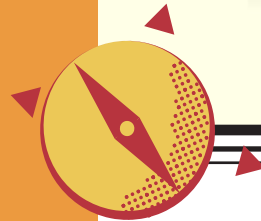
SUL has a wide range of homestay and residential centres throughout the UK, and one centre in Ireland.

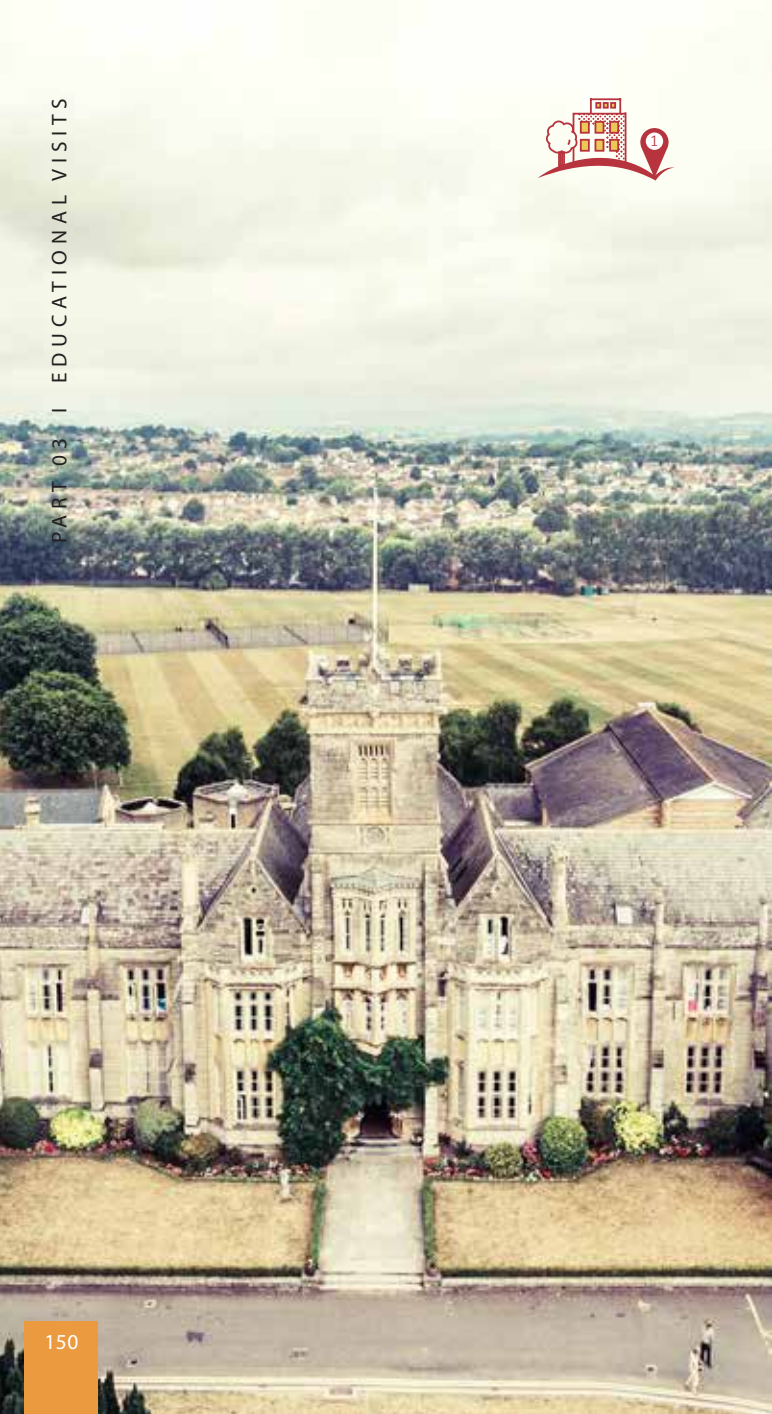
Choose from the beach, countryside or city locations as a base for your group. Please see individual location pages for more information on each centre.





GROUP accommodation





QUEEN'S COLLEGE



Age range: 8-17 years
Group size: 24-100+ students
July-August

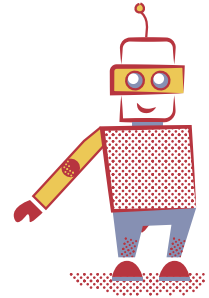


Queen's College is located in Taunton, the county town of Somerset, England. This beautiful boarding school offers us a high standard of accommodation and an excellent range of facilities. We both share the values stated in the college's motto 'Non scholae sed vitae discimus' / 'We educate not just for school but for life'.

Accommodation



On-site facilities





ST. ALBANS (LONDON)



Age range: 8-17 years
Group size: 24-100 students
All year round

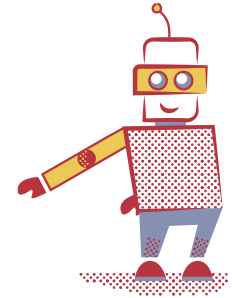


This beautiful residential centre was built as a convent in 1899. From Spring 2013 the buildings were converted to a high standard. The nearby capital city provides a wealth of history, culture and interesting places to visit.



On-site facilities

Accommodation





GLENALMOND COLLEGE (SCOTLAND)

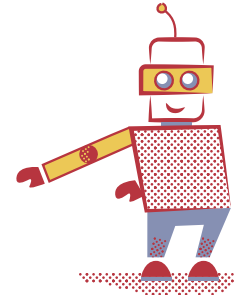
Age range: 8-17 years
Group size: 30-100 students
March-April

Glenalmond College is a beautiful boarding school in Scotland, based in the countryside just 13 kms from Perth and one hour from both Glasgow and Edinburgh. A wonderful, safe college for school groups, with first-class private facilities. An ideal base for educational or holiday programmes in Scotland.

Accommodation



On-site facilities





STOVER SCHOOL



Age range: 8-17 years
Group size: 24-100+ students
July-August



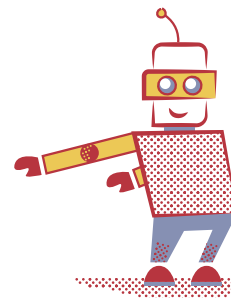
Stover school is a grand country mansion set in extensive parkland which was transformed into a boarding school in the late 1920's, situated near Exeter.

In the heart of Devon, Stover is also close to the coastal town of Teignmouth and the city of Plymouth, meaning it's within easy reach of magnificent UK beaches and an abundance of attractions.

On-site facilities



Accommodation





SHEBBEAR COLLEGE

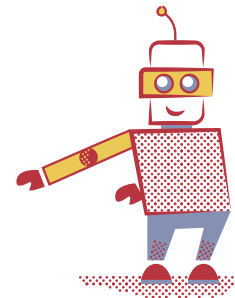
Age range: 8-17 years
Group size: 24-100+ students
July-August

Shebbear College is a unique school set in the wonderful countryside of Devon in the south west of England. Just 30 minutes from the coast, students can enjoy surfing, horse riding as well as full range of on-site activities.

Accommodation



On-site facilities





TAUNTON SCHOOL

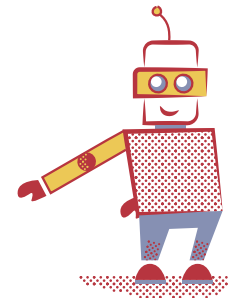
Age range: 8-17 years
Group size: 24-100+ students
February-March, April
July-August, October

Taunton School is an impressive private boarding school situated in the lovely town of Taunton. The school is close to Bath, Bristol, many other historic places in Somerset and the famous seaside town of Lyme Regis in Dorset.

Accommodation



On-site facilities





ST. AUSTELL

Age range: 8-17 years

Group size: 24-100+ students

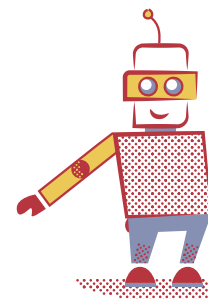
July-August

St. Austell is located on the south coast of Cornwall, famous for its uniquely beautiful landscapes and beaches, its Celtic culture and modern visitor attractions. This centre is ideally located for groups wishing to explore one of the most interesting coastal regions of Europe.

Accommodation



Local facilities





EXETER



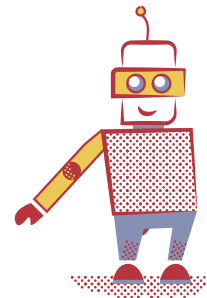
Age range: 11-17 years
Group size: 24-48 students
September-June

Exeter is a city of contrasts. Its ancient quarter has a rich history, from the magnificent cathedral to the medieval underground passages. Located on a stunning river and near the Dartmoor National Park, it is a wonderful place to stay.

Accommodation



Local facilities





BRISTOL

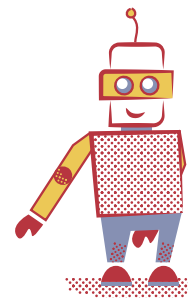
Age range: 8-17 years
Group size: 24-48 students
All year round

Contemporary and eco-friendly Bristol is the largest city in the south west of England. It provides many cultural and leisure opportunities for both educational visits and language holidays. The city is full of creativity, maritime history and educational attractions.

Accommodation



Local facilities





GUILDFORD

Age range: 11-17 years
Group size: 40-50 students
September-June

Guildford is an important town in the heart of Surrey, on the south-western tip of Greater London.

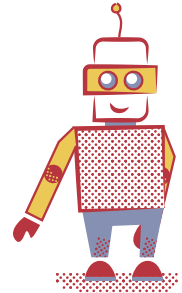
The historic centre includes the 17th century Guildford house and the medieval Guildford Castle & gardens.

It's a great base to explore London and the historic south-east coast of England, including nearby Brighton.

Accommodation



Local facilities





NORTHAMPTON

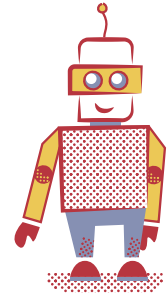
Age range: 11-17 years
Group size: 24-50 students
September-June

Northampton is located in the centre of the country, ideal for visits to various English cities such as Birmingham, Oxford, London and Cambridge. A large, friendly market town in the East Midlands region of England, Northampton has a long history of shoe leather manufacturing and is also steeped in archaeological history.

Accommodation



Local facilities





WORCESTER

Age range: 11-17 years
Group size: 24-55 students
All year round

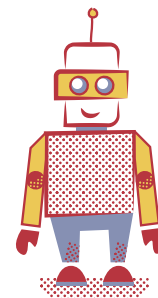


SUL groups really enjoy staying in the charming cathedral city of Worcester, which offers both traditional English charm and modern convenience. The city is within easy reach of Stratford-upon-Avon (the birthplace of Shakespeare), Warwick and Cheltenham.

Accommodation



Local facilities





SAFFRON WALDEN

Age range: 11-17 years
Group size: 24-50 students
All year round

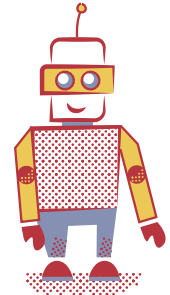


Saffron Walden is a delightful medieval market town located in north-west Essex. It is just 15 miles to the south of Cambridge, with day visits to London also possible. It has a rich heritage of old buildings, including the magnificent Jacobean mansion Audley End House. There is also an excellent range of cultural and sporting facilities.

Accommodation



Local facilities





EDINBURGH (SCOTLAND)

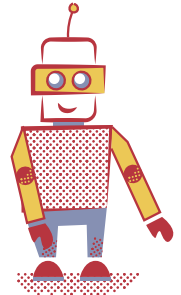
Age range: 11-17 years
Group size: 24-60 students
All year round

Scotland's capital city of Edinburgh is not only a remarkable city to visit but is conveniently located to explore other key places of Scotland. From historic landmarks and impressive architecture to great museums and attractions, groups get a taste of Scottish culture in this distinct and vibrant city.

Accommodation



Local facilities



SEE YOU IN 2020!

 SULEducation

 SULEducation

 www.sul.education



31 Southpark Road,
Tywardreath,
Cornwall.
PL24 2PU. UK.
www.sul.education
+44 (0)1726 814227



HOMESTAY ACCOMMODATION

For groups requiring homestay accommodation, we have caring and welcoming hosts, carefully selected and vetted by SUL.

Benefits include:

- ✓ Careful matching of students with host families
- ✓ Everyday English communication in an English speaking home
- ✓ Experience of British culture & lifestyle first-hand
- ✓ SUL Local Organiser Support



RESIDENTIAL ACCOMMODATION

Enjoy the space and flexibility of a residential centre, the experience of living in a British boarding school, or the convenience of a hostel for short visits.

Benefits include:

- ✓ Secure accommodation
- ✓ Outdoor space for activities
- ✓ On-site sport* and classroom facilities
- ✓ On-site evening activities to promote communication
- ✓ On-site SUL Course Director Support

*Hostels may not include on-site sport facilities

ON-SITE FACILITIES

(Residential centres)

LOCAL FACILITIES

(Home stay centres)

- All-weather pitch
- Sports hall / centre
- Lecture theatre
- Hall with stage
- Student café / coffee shop
- Playing fields
- Wi-fi access
- Lots of outdoor space
- Laundry service (on request)
- Games room
- Library
- TV lounge
- Classrooms
- Swimming pool (on request)
- Tennis courts
- Art studio
- Cricket pitch
- Theatre
- Music centre
- Football pitches
- Classrooms in nearby schools, colleges or conference centres



British School Day Option as part of your programme SUL can offer a taste of English academic life, arranging for your students to spend time in a local school with British teenagers. We can offer this in Exeter, Saffron Walden and Worcester.

ACCOMMODATION

- FB** Full Board
- HB** Half Board
- Number of students in the room
- EnS** En-suite
- SBa** Shared bathrooms
- Separate accommodation for boys & girls

